



Frischwasser-Kit X-Linie

Bedienungsanleitung

Fresh water kit X line

Instructions for use

Kit d'eau fraîche ligne X

Mode d'emploi

Kit acqua fresca linea X

Istruzioni per l'uso

Kit voor verswateraansluiting X-serie

Gebruiksaanwijzing

Kit para toma de agua fresca línea X

Modo de empleo

Kit de água fresca da linha X

Manual de instruções

Direktvatten-set X-line

Bruksanvisning

Vanntilkoblingssett X-serie

Instruksjonsbok

Zestaw stałego podłączenia świeżej wody linia X

Instrukcja obsługi

Комплект для подачи свежей воды для серии X

Руководство по эксплуатации

Sada pro čerstvou vodu série X

Návod k obsluze

Table of contents

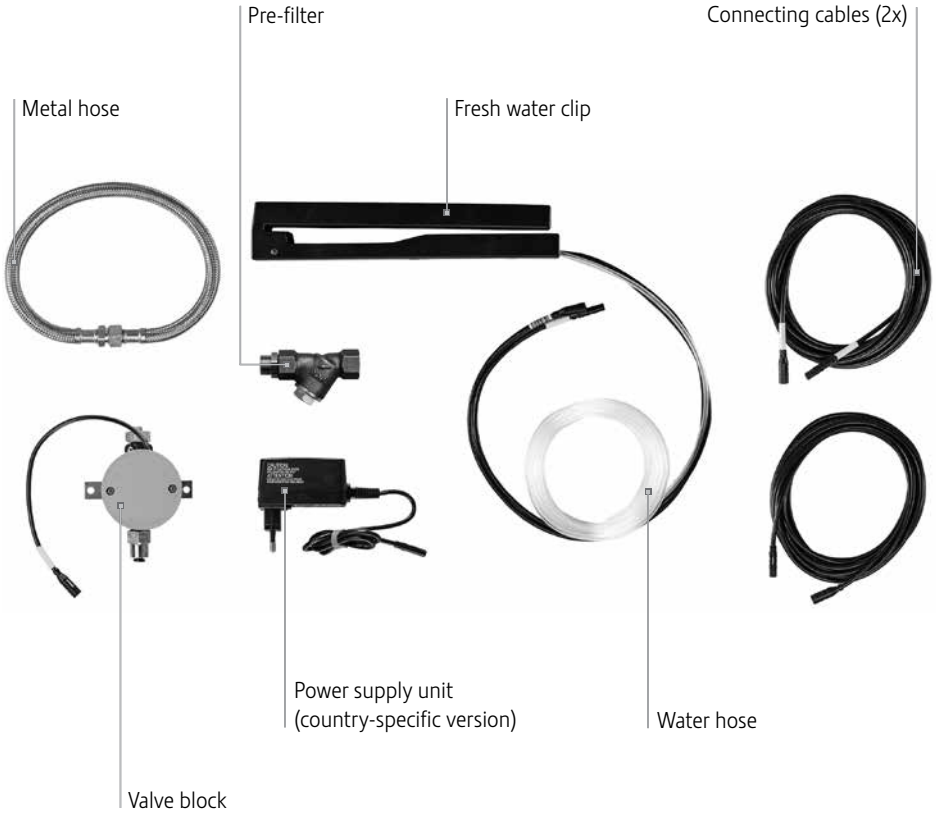
Control elements	10
Important information	11
Proper use	11
For your safety	11
1 Using the fresh water kit for the first time.....	11
Requirements for installation	11
Installation	12
2 Daily operation	13
3 Descaling the fresh water clip	14
4 Checking the pre-filter	14
5 LED displays	14
6 Technical data	15
7 JURA contact details/legal information.....	15

Symbol description

Symbols used

-
- ▶ **Prompt to take action.** This symbol means that you are being prompted to perform some action.
-
- i** **Information** and tips
-

Control elements



Important information

Proper use

The fresh water kit is only intended to be used together with a JURA coffee machine (X10/X8/X6). Use for any other purpose will be deemed improper. JURA cannot accept any responsibility for the consequences of improper use.

Before using the machine, read these instructions for use thoroughly and completely and comply with the instructions they contain. A warranty service is not applicable for damage or defects caused by non-compliance with the instructions for use. Keep these instructions for use close to the machine and pass them on to the next user.

For your safety

- Ensure that the fresh water kit is installed correctly to prevent water from leaking.
- Only operate the machine with the mains adapter provided.
- Always unplug the power supply unit from the power socket once you have closed the shut-off valve.
- Do not allow children to play with the machine.

- Children may not clean or service the machine unless supervised by a responsible person.
- Children aged 8 and over may only operate the machine without supervision if they have been instructed in how to use it safely. Children must be able to recognise and understand the potential dangers arising from incorrect use.

People, including children, who

- do not have the physical, sensory or mental capabilities to use the machine safely or
- are inexperienced or lack knowledge

must be supervised by a responsible person when using it, or must be instructed in how to use it correctly.

1 Using the fresh water kit for the first time

Requirements for installation

A few preparations are necessary before you can use the fresh water kit correctly for the first time. The following preparations must be carried out by a **professionally qualified person**:

- The mains connection for the coffee machine must be protected by a residual current device (RCD).
- There must be a power switch to disconnect the power supply to the coffee machine.

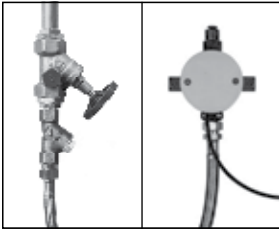
Fresh water kit X line

- Make sure that the on-site water pipe has been rinsed prior to installation.
- The **house end** of the permanent water connection (up to the supplied valve block) must have a shut-off valve with a non-return valve (type EA) and **filter**. Have a qualified person install the **supplied pre-filter** and the metal hose on the valve block.
- The permanent water connection must be established in accordance with the technical data (see chapter 6, 'Technical data').

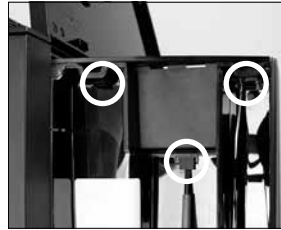
i These preparations must be carried out by a qualified person.

i The preparations must be carried out before the fresh water kit can be used for the first time.

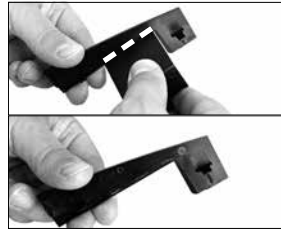
We recommend mounting the valve block on a wall (see diagram).



- ▶ Loosen the panel hooks using a tool such as a flat screwdriver (see white circles). Remove the panel.



- ▶ Bend the panel multiple times along the perforated line (see the dashed line in the diagram) and break it off.



- ▶ Insert the fresh water clip into the **empty** water tank.



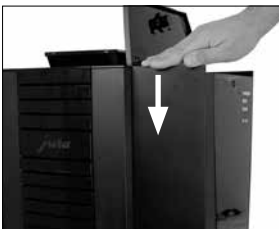
- ▶ Guide the cable and water hose through the tabs.



Installation

i Rinse the fresh water clip under running water before using it for the first time.

- ▶ Open the water tank cover.
- ▶ Push down the cover at the rear of the machine and remove.

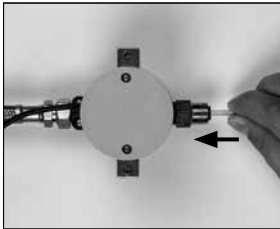


Fresh water kit X line

- ▶ Insert the panel above the fresh water clip.
- ▶ Attach the cover to the rear of the machine.

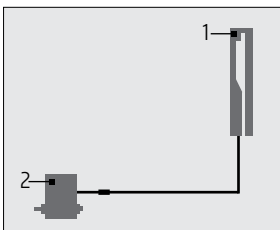


- ▶ Insert the water hose firmly into the valve block. Check that the water hose is firmly in place and for leaks.



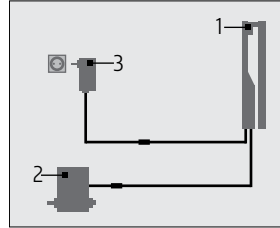
- i** You may shorten the water hose as required.
- i** The water connection (to the valve block) must have been installed at the house end by a qualified person. Have a qualified person install the pre-filter and the metal hose on the valve block.

- ▶ Connect the **yellow** marked cable at the fresh water clip (1) to the **yellow** marked cable at the valve block (2).



- i** Use one of the connecting cables supplied, if required.

- ▶ Connect the second cable at the fresh water clip (1) to the power supply unit cable (3).



- ▶ Insert the power supply unit into a power socket.

- i** Empty the water tank **after it has been filled for the first time** and rinse it out.

2 Daily operation

Ensuring hygienic conditions when using water is key to a perfect coffee result in the cup every time. With this in mind, you should clean the fresh water clip and the water tank **every day**.

- i** Never place the fresh water clip in the empty water tank if the shut-off valve is closed and the power supply unit is plugged into a power socket. The valve block poses a risk of overheating.
- ▶ Close the shut-off valve.
- ▶ Unplug the power supply unit from the power socket.
- ▶ Remove the fresh water clip and rinse thoroughly under running water.
- ▶ Remove the water tank, then empty and rinse it.

3 Descaling the fresh water clip

Calcium deposits may build up on the fresh water clip. We recommend descaling the fresh water clip regularly.

⚠ CAUTION

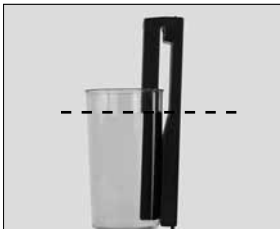
If the descaling agent comes into contact with the skin or eyes, this can cause irritation.

- ▶ Avoid contact with the skin or eyes.
- ▶ Rinse off the descaling agent with clean water. Should you get any descaling agent in your eye, see a doctor.

CAUTION

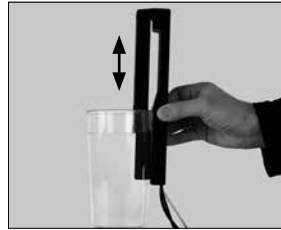
If the descaling agent comes into contact with sensitive surfaces (e.g. marble), damage cannot be ruled out.

- ▶ Clean up any splashes immediately.
- ▶ Close the shut-off valve.
- ▶ Unplug the power supply unit from the power socket.
- ▶ Make a descaling solution in a tall receptacle (3 JURA descaling tablets in 1000 ml water).
- ▶ Submerge the fresh water clip in the descaling solution up to the height shown below **for approximately 1 hour**.



- ▶ Rinse the receptacle thoroughly and fill with fresh water.

- ▶ Immerse and remove the clip approximately 10 times to rinse out the remains of the descaling solution.



- i** Calcium deposits may build up in the water tank. For this reason, you should remove and descale the water tank regularly.

4 Checking the pre-filter

Check the filter sieve in the pre-filter regularly (approx. every 3 months). To do this, screw out the filter sieve and rinse it thoroughly under running water.

5 LED displays

Status LEDs at the top and side of the fresh water clip:

- Light up red: Fresh water clip is not correctly attached or the maximum switch-on time has been reached.
- Do not light up: Not an error; fresh water clip is working properly.
- Flash red: Error; the safety float has been activated. The water tank will no longer be filled. Perform descaling and empty the water tank. If the error persists, contact JURA service.

6 Technical data

Voltage	Input: 100–240 V ~, 50/60 Hz Output: 12 V ==
Ambient conditions	Ambient temperature 10–35 °C
Conformity symbol	CE
Length of connecting cables	approx. 5 m
Water hose (Ø 4 mm)	approx. 5 m
Reinforced hose for water supply line with G 3/8" union nut	approx. 0.5 m
Permitted valve operating pressure (in valve block)	1.5–10 bar
Filling capacity	approx. 1000 ml/min

Technical data for house end of permanent water connection:

Permanent water connection	G 3/8" external thread
Water supply line	Reinforced hose with G 3/8" union nut (hose must comply with the applicable regulations for your country)
Shut-off valve	with non-return valve (type EA)

7 JURA contact details/legal information

JURA Elektroapparate AG
Kaffeeweltstrasse 10
CH-4626 Niederbuchsiten
Tel. +41 (0)62 38 98 233

You will find additional contact details for your country at www.jura.com.

Directives

The machine complies with the following directives:

- 2011/65/EU (RoHS)
- 1907/2006/EC (REACH)
- 2014/35/EU (Low Voltage Directive)
- 2014/30/EU (Electromagnetic Compatibility)
- 2009/125/EC (Ecodesign Directive)